



The ASI SB0403B110AL6 is an enclosed motor disconnect switch or rotary disconnect switch with 3 poles and can be used with single phase and three phase motors. This enclosed motor disconnect switch is UL508 Listed with ratings of 600 volts, 40 amps for motors rated from 2 HP to 20 Hp. With a IP65 rating, equivalent to NEMA 4, this enclosed rotary disconnect can be used in outdoor applications which require a weatherproof rotary disconnect switch. The housing of this enclosed motor disconnect switch is black with a yellow cover and the red lockable handle can accept up to 3 locks in the 0 to Off position. The dimensions of this enclosed rotary disconnect switch are 120x100x85 mm. For secure wiring the enclosed motor disconnect switch has PG16 cable gland knockouts.

#### Key Features:

- ON-OFF 3P
- ABS double insulation thermoplastic enclosure
- Rated operational current  $I_n$ : 40A
- Rated thermal current  $I_{th}$ : 40A
- Rating insulation voltage: 690V
- Positive opening double break contacts, silver alloy made
- Yellow plate 48x48mm and red padlockable knob (max. 3 padlocks)
- Switching angle: 90°
- Cover interlock in "ON" position
- Front drive
- IP65 Protection degree
- Fixing enclosure: 4 screw at 80x98mm



#### Technical Data IEC 947-3 EN 60947-3

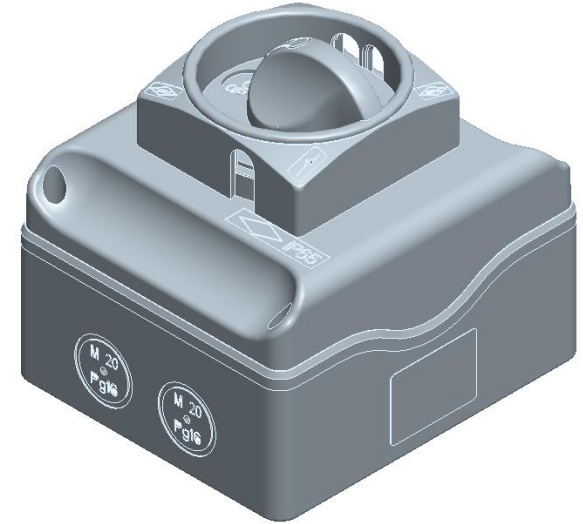
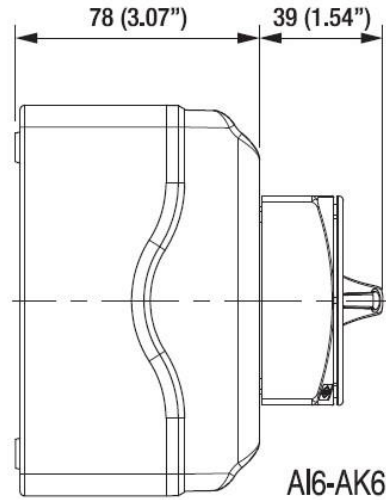
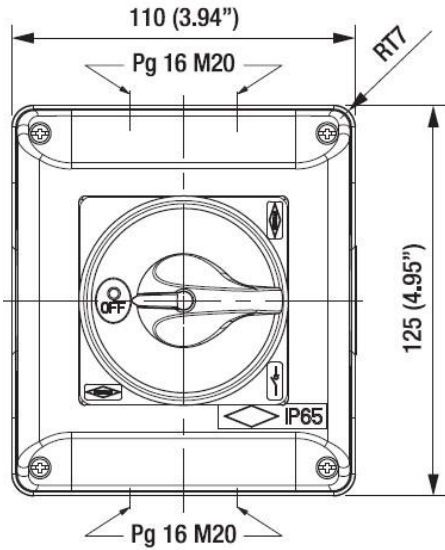
Rated insulation voltage		$U_i$	V	800
Rated operating voltage		$U_e$	V	800
Rated impulse withstand voltage		$U_{imp}$	kV	8
Rated thermal current for open switch		$I_{th}$	A	40
Rated thermal current for enclosed switch		$I_{the}$	A	40
Rated operation frequency			Hz	50/60
Power dissipation for each pole			W	2,5
Rated operating current $I_e$				
AC-21A Switching resistive loads, including moderate overloads	690V	$I_e$	A	40
AC-22A Switching of mixed resistive and inductive loads, including moderate overloads	690V	$I_e$	A	40
Rated operating power				
AC-23A Switching of motor loads or other highly inductive loads	400V	$K_w$ (A)		15 (28)
	690V	$K_w$ (A)		15 (18)
AC-3 Squirrel cage motors: starting, switching off motors during running	400V	$K_w$ (A)		11 (21)
	690V	$K_w$ (A)		11 (21)
Rated breaking capability in category AC-23A ( $\cos \varphi=0,45$ )	400V	A		228
	690V	A		144
Short circuit protection				
Rated short time withstand current (1s)		$I_{cw}$	A	500
Rated short-circuit make capacity		$I_{cm}$	A	750
Rated conditional short-circuit current			kA	10
With fuses class gG	500V	A		40

#### Technical Data IEC 947-3 EN 60947-3

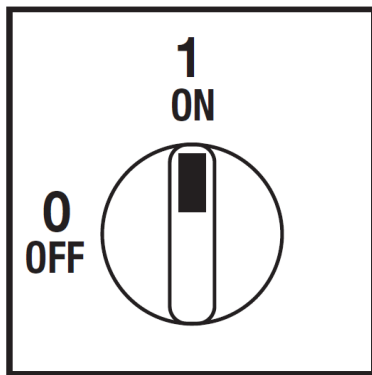
General use voltage		$U_e$	V	600
General use current	600V AC	$I_e$	A	40
Rated operating power				
1 phase - 2 pole	120V	Hp/FLA		- / -
	240V	Hp/FLA		- / -
3 phase - 3 pole	200V	Hp/FLA		- / -
	240V	Hp/FLA		- / -
	480V	Hp/FLA		- / -
	600V	Hp/FLA		10 / 11
Standards Line protection fuses (DS size 1: Class RK5, 600Vac, 200kA A.I.C.), (DS size 2: Class J, 600Vac)			A	40
Short Circuit Rating@600Vac			kA	10

## Drawings

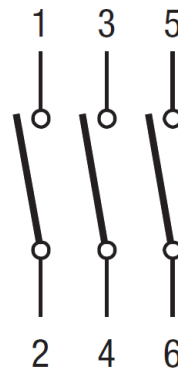
### Dimensions



### Plate and position



### Electrical scheme



### Drilling templates

