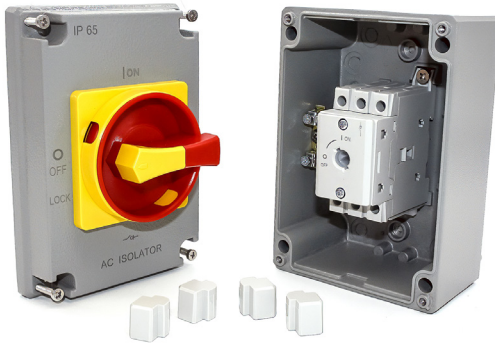


Technical Data

JHAS80 Series AC Isolator 800V 125A		
Current (≤40℃) Agreed heating current	40A	
IEC rated operational current Ie AC-21A/B (≤690V)	40A/40A	
IEC rated operational current Ie AC-22A/B	415V	40A/40A
	500V	
	690V	32A/40A
IEC rated operational current Ie AC-23A/B	415V	40A/40A
	500V	25A/25A
	690V	
IEC rated operational current Ie DC-21B	110VDC	40A ¹
	250VDC	40A ²
	400VDC	25A ³
IEC rated operational power (3 phase) AC-23A/B	415V	18.5KW
	500V	
	690V	
Short circuit withstand current of fuse protection (kA rms expected value)		
Fuse class	415V	40A
Rated conditional short-circuit current	415V	10kA
Short circuit withstand current of circuit breaker for protection, any circuit breaker that can trip within 0.3s		
Rated short-time withstand current	0.35	2.5kA
Short circuit performance (unprotected)		
Rated short-time withstand current	15	1.26kA
Rated short circuit making capacity	1.8kA	
Cable cross section	1.5~10mm ²	
Rated insulation voltage Ui	800V	
Rated impulse withstand voltage Uimp	8kV	
Mechanical Endurance	100000	
Ambient Temperature	Operating -25~+55℃	Storage -40~+70℃

1 Each pole is used as positive and negative 2 Three poles in series, two poles in series for positive, one pole for negative
3 Four poles in series, two poles in series for positive, other two poles in series for negative



The ASI-A10040A3PEULX AC Isolator Enclosure Switch is a heavy-duty power isolation solution designed for demanding industrial environments. It provides a clearly visible and secure method for disconnecting AC power during maintenance or emergency situations.

Built with a rugged aluminum enclosure, this model offers enhanced mechanical strength and durability, making it well-suited for harsher conditions where added protection is required. The rotary handle allows for quick operation and immediate status recognition, while lockout/tagout capability helps support safe maintenance procedures.

UL Listed for industrial use, the ASI-A10040A3PEULX delivers dependable performance and long service life in control panels, machinery, and power distribution applications.



Key Features:

- AC isolator switch for reliable power isolation
- Aluminum enclosure for added durability and protection
- Rotary handle with clear ON/OFF indication
- Lockout/tagout capable for enhanced safety
- UL Listed
- Designed for industrial and heavy-duty applications

Drawings

Overall and Installation Dimension(mm)

