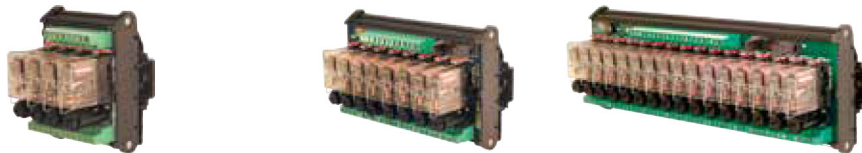


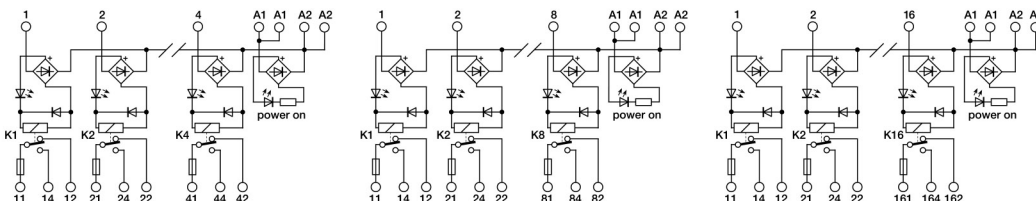
- Pluggable relay
- AC/DC input voltage
- SPDT contact
- Allow PNP and NPN command
- Contact protected by replaceable fuse



NOTE

Manufacturer and model of the relay is not binding, technical data are to be considered typical

(2) Fuses are not provided, they must be selected according to the load current. The max. value of 6.3 A is referred to the fuses holder capability according to EN 60127.



CODE TYPE	R41U24F	XR041U24F	R81U24F	XR081U24F	R161U24F	XR161U24F
INPUT TECHNICAL DATA						
Input rated voltage	24 Vac/dc ±10%		24 Vac/dc ±10%		24 Vac/dc ±10%	
Pull in drop out voltage type	16.8 V / 2.4 V		16.8 V / 2.4 V		16.8 V / 2.4 V	
Current consumption	22 mA ±10%		22 mA ±10%		22 mA ±10%	
Turn ON OFF time	10 ms / 5 ms		10 ms / 5 ms		10 ms / 5 ms	
Frequency	—		—		—	
Protection circuit	Free-wheel diode, Reverse polarity		Free-wheel diode, Reverse polarity		Free-wheel diode, Reverse polarity	
Connection type	2.5 mm ² screw type		2.5 mm ² screw type and 16 poles connector		2.5 mm ² screw type and 20 poles connector	
Input channels	4 pluggable		8 pluggable		16 pluggable	
OUTPUT TECHNICAL DATA						
Contact type	SPDT, 1 form C, AgSnO ₂		SPDT, 1 form C, AgSnO ₂		SPDT, 1 form C, AgSnO ₂	
Output voltage	—		—		—	
Nominal current	16 A (250 Vac)		16 A (250 Vac)		16 A (250 Vac)	
Max current	16 A		16 A		16 A	
Leakage current with signal 0	—		—		—	
Min applicable load	—		—		—	
Max fuse current	6.3 A (250 Vac) [2]		6.3 A (250 Vac) [2]		6.3 A (250 Vac) [2]	
Connection type	2.5 mm ² [AWG26-14], screw type		2.5 mm ² [AWG26-14], screw type		2.5 mm ² [AWG26-14], screw type	
Protection circuit device	—		—		—	
GENERAL TECHNICAL DATA						
Operating temperature range	-20...+70°C		-20...+70°C		-20...+70°C	
Input output isolation	2.5 kVac / 60 s		2.5 kVac / 60 s		2.5 kVac / 60 s	
Protection degree	IP 00		IP 00		IP 00	
Reference Standards	—		—		—	
Overtoltage category pollution degree	II / 2		II / 2		II / 2	
Status indication	LED "DC OK" / LED "Relay"		LED "DC OK" / LED "Relay"		LED "DC OK" / LED "Relay"	
Housing material	UL94V-0 plastic material		UL94V-0 plastic material		UL94V-0 plastic material	
Dimensions	70x93x75 mm		137x93x75 mm		250x93x75 mm	
Approximate weight	210 g		326 g		770 g	
Mounting information	on a rail, side by side		on a rail, side by side		on a rail, side by side	
APPROVALS	CE		CE		CE	
ACCESSORIES						
Mounting rail IEC60715 TH35 75	PR/3/AC, PR/3/AC/ZB, PR/3/AS, PR/3/AS/ZB		PR/3/AC, PR/3/AC/ZB, PR/3/AS, PR/3/AS/ZB		PR/3/AC, PR/3/AC/ZB, PR/3/AS, PR/3/AS/ZB	
Mounting rail IEC60715 TH35 15	PR/3/PP, PR/3/PP/ZB, PR/3/PA, PR/3/PA/ZB		PR/3/PP, PR/3/PP/ZB, PR/3/PA, PR/3/PA/ZB		PR/3/PP, PR/3/PP/ZB, PR/3/PA, PR/3/PA/ZB	
Marking tag	—		—		—	
Spare part relay	8904073		8904073		8904073	