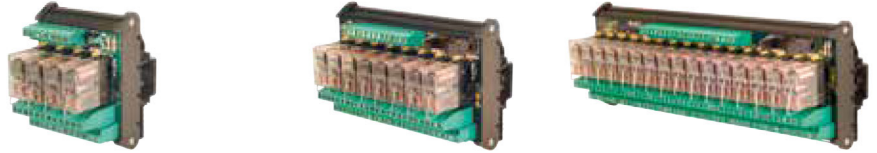
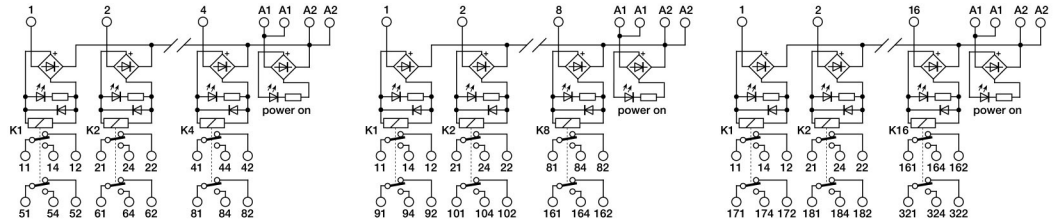


- Pluggable relay
- AC/DC input voltage
- DPDT contact
- Allow PNP and NPN command



**NOTE**  
Manufacturer and model of the relay is not binding, technical data are to be considered typical



CODE TYPE	R42EAD	XR042EAD	R82EAD	XR082EAD	R162EAD	XR162EAD
<b>INPUT TECHNICAL DATA</b>						
Input rated voltage	24 Vac/dc ±10%		24 Vac/dc ±10%		24 Vac/dc ±10%	
Pull indrop out voltage type	16.8 V / 2.4 V		16.8 V / 2.4 V		16.8 V / 2.4 V	
Current consumption	22 mA ±10%		22 mA ±10%		22 mA ±10%	
Turn ON OFF time	10 ms / 5 ms		10 ms / 5 ms		10 ms / 5 ms	
Frequency	—		—		—	
Protection circuit	Free-wheel diode, Reverse polarity		Free-wheel diode, Reverse polarity		Free-wheel diode, Reverse polarity	
Connection type	2.5 mm <sup>2</sup> screw type		2.5 mm <sup>2</sup> screw type and 16 poles connector		2.5 mm <sup>2</sup> screw type and 20 poles connector	
Input channels	4 pluggable		8 pluggable		16 pluggable	
<b>OUTPUT TECHNICAL DATA</b>						
Contact type	DPDT, 2 form C, AgSnO <sub>2</sub>		DPDT, 2 form C, AgSnO <sub>2</sub>		DPDT, 2 form C, AgSnO <sub>2</sub>	
Output voltage	—		—		—	
Nominal current	10 A (250 Vac)		10 A (250 Vac)		10 A (250 Vac)	
Max current	10 A		10 A		10 A	
Leakage current with signal 0	—		—		—	
Min applicable load	—		—		—	
Max fuse current	—		—		—	
Connection type	2.5 mm <sup>2</sup> [AWG26-14], screw type		2.5 mm <sup>2</sup> [AWG26-14], screw type		2.5 mm <sup>2</sup> [AWG26-14], screw type	
Protection circuit device	—		—		—	
<b>GENERAL TECHNICAL DATA</b>						
Operating temperature range	-20...+70°C		-20...+70°C		-20...+70°C	
Input output isolation	2.5 kVac / 60 s		2.5 kVac / 60 s		2.5 kVac / 60 s	
Protection degree	IP 00		IP 00		IP 00	
Reference Standards	—		—		—	
Overtoltage category pollution degree	II / 2		II / 2		II / 2	
Status indication	LED "DC OK" / LED "Relay"		LED "DC OK" / LED "Relay"		LED "DC OK" / LED "Relay"	
Housing material	UL94V-0 plastic material		UL94V-0 plastic material		UL94V-0 plastic material	
Dimensions	70x93x75 mm		137x93x75 mm		250x93x75 mm	
Approximate weight	227 g		427 g		835 g	
Mounting information	on a rail, side by side		on a rail, side by side		on a rail, side by side	
<b>APPROVALS</b>	<b>CE</b>		<b>CE</b>		<b>CE</b>	
<b>ACCESSORIES</b>						
Mounting rail IEC60715 TH35 75	PR/3/AC, PR/3/AC/ZB, PR/3/AS, PR/3/AS/ZB		PR/3/AC, PR/3/AC/ZB, PR/3/AS, PR/3/AS/ZB		PR/3/AC, PR/3/AC/ZB, PR/3/AS, PR/3/AS/ZB	
Mounting rail IEC60715 TH35 15	PR/3/PP, PR/3/PP/ZB, PR/3/PA, PR/3/PA/ZB		PR/3/PP, PR/3/PP/ZB, PR/3/PA, PR/3/PA/ZB		PR/3/PP, PR/3/PP/ZB, PR/3/PA, PR/3/PA/ZB	
Marking tag	—		—		—	
Spare part relay	8904074		8904074		8904074	