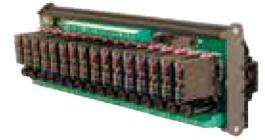


- Pluggable relay
- Allow PNP and NPN command
- Suitable for DC loads
- Contact protected by replaceable fuse

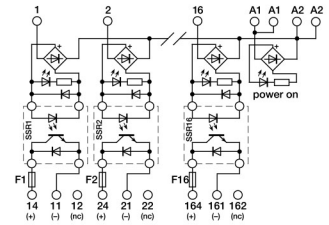
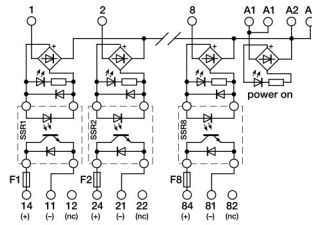
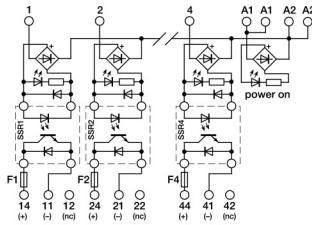


NOTE

Manufacturer and model of the relay is not binding, technical data are to be considered typical

(1) Version produced upon request; contact our sales office for availability.

(2) Fuses are not provided, they must be selected according to the load current. The max. value of 6.3 A is referred to the fuses holder capability according to EN 60127.



| CODE | XR041S24F | XR081S24F | XR161S24F |
|--|---|---|---|
| TYPE | R41S24F (1) | R81S24F (1) | R161S24F (1) |
| INPUT TECHNICAL DATA | | | |
| Input rated voltage | 24 Vdc (range 19.5...28.5 Vdc) | 24 Vdc (range 19.5...28.5 Vdc) | 24 Vdc (range 19.5...28.5 Vdc) |
| Pull in drop out voltage type | 19.2 V / 1 V | 19.2 V / 1 V | 19.2 V / 1 V |
| Current consumption | 25 mA ±10% at 24 Vdc | 25 mA ±10% at 24 Vdc | 25 mA ±10% at 24 Vdc |
| Turn ON OFF time | 1 ms / 1 ms | 1 ms / 1 ms | 1 ms / 1 ms |
| Frequency | 100 Hz max | 100 Hz max | 100 Hz max |
| Protection circuit | — | — | — |
| Connection type | 2.5 mm ² screw type | 2.5 mm ² screw type | 2.5 mm ² screw type |
| Input channels | 4 pluggable | 8 pluggable | 16 pluggable |
| OUTPUT TECHNICAL DATA | | | |
| Contact type | transistor | transistor | transistor |
| Output voltage | 3...50 Vdc | 3...50 Vdc | 3...50 Vdc |
| Nominal current | 2 A [24 Vdc] at 30°C | 2 A [24 Vdc] at 30°C | 2 A [24 Vdc] at 30°C |
| Max current | 8 A for 10 ms | 8 A for 10 ms | 8 A for 10 ms |
| Leakage current with signal 0 | 0.1 mA | 0.1 mA | 0.1 mA |
| Min applicable load | 10 mA | 10 mA | 10 mA |
| Max fuse current | 6.3 A [250 Vac] [2] | 6.3 A [250 Vac] [2] | 6.3 A [250 Vac] [2] |
| Connection type | 2.5 mm ² [AWG26-14], screw type | 2.5 mm ² [AWG26-14], screw type | 2.5 mm ² [AWG26-14], screw type |
| Protection circuit device | — | — | — |
| GENERAL TECHNICAL DATA | | | |
| Operating temperature range | -20...+70°C (derating -0.75 W/°C over 30°C) | -20...+70°C (derating -0.75 W/°C over 30°C) | -20...+70°C (derating -0.75 W/°C over 30°C) |
| Input output isolation | 2.5 kVac / 60 s | 2.5 kVac / 60 s | 2.5 kVac / 60 s |
| Protection degree | IP 00 | IP 00 | IP 00 |
| Reference Standards | — | — | — |
| Oversvoltage category pollution degree | II / 2 | II / 2 | II / 2 |
| Status indication | LED "Input" | LED "Input" | LED "Input" |
| Housing material | UL94V-0 plastic material | UL94V-0 plastic material | UL94V-0 plastic material |
| Dimensions | 67x93x75 mm | 137x93x75 mm | 250x93x75 mm |
| Approximate weight | 207 g | 379 g | 756 g |
| Mounting information | vertical on a rail, side by side | vertical on a rail, side by side | vertical on a rail, side by side |
| APPROVALS | CE | CE | CE |
| ACCESSORIES | | | |
| Mounting rail IEC60715 TH35 75 | PR/3/AC, PR/3/AC/ZB, PR/3/AS, PR/3/AS/ZB | PR/3/AC, PR/3/AC/ZB, PR/3/AS, PR/3/AS/ZB | PR/3/AC, PR/3/AC/ZB, PR/3/AS, PR/3/AS/ZB |
| Mounting rail IEC60715 TH35 15 | PR/3/PP, PR/3/PP/ZB, PR/3/PA, PR/3/PA/ZB | PR/3/PP, PR/3/PP/ZB, PR/3/PA, PR/3/PA/ZB | PR/3/PP, PR/3/PP/ZB, PR/3/PA, PR/3/PA/ZB |
| Marking tag | — | — | — |
| Spare part relay | 8904404 | 8904404 | 8904404 |