

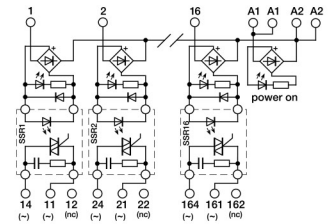
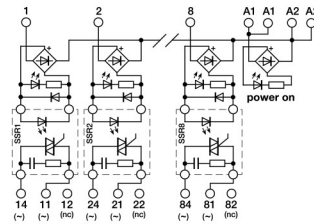
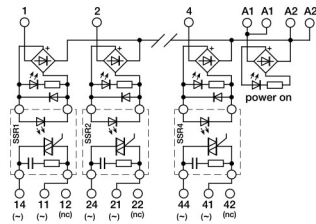
- Pluggable relay
- Allow PNP and NPN command
- Suitable for AC loads



NOTE

Manufacturer and model of the relay is not binding, technical data are to be considered typical

(1) Version produced upon request; contact our sales office for availability.



| CODE TYPE | R42T24 (1) | XR042T24 | R82T24 (1) | XR082T24 | R162T24 (1) | XR162T24 |
|---------------------------------------|---|----------|---|----------|---|----------|
| INPUT TECHNICAL DATA | | | | | | |
| Input rated voltage | 24 Vdc (range 19.5...28.5 Vdc) | | 24 Vdc (range 19.5...28.5 Vdc) | | 24 Vdc (range 19.5...28.5 Vdc) | |
| Pull indrop out voltage type | 19.2 V / 1 V | | 19.2 V / 1 V | | 19.2 V / 1 V | |
| Current consumption | 25 mA ±10% at 24 Vdc | | 25 mA ±10% at 24 Vdc | | 25 mA ±10% at 24 Vdc | |
| Turn ON OFF time | 11 ms / 11 ms (at 50 Hz) | | 11 ms / 11 ms (at 50 Hz) | | 11 ms / 11 ms (at 50 Hz) | |
| Frequency | 30...100 Hz max | | 30...100 Hz max | | 30...100 Hz max | |
| Protection circuit | — | | — | | — | |
| Connection type | 2.5 mm ² screw type | | 2.5 mm ² screw type | | 2.5 mm ² screw type | |
| Input channels | 4 pluggable | | 8 pluggable | | 16 pluggable | |
| OUTPUT TECHNICAL DATA | | | | | | |
| Contact type | zero crossing triac | | zero crossing triac | | zero crossing triac | |
| Output voltage | 48...280 Vac | | 48...280 Vac | | 48...280 Vac | |
| Nominal current | 3 A [24 Vdc] at 30°C | | 3 A [24 Vdc] at 30°C | | 3 A [24 Vdc] at 30°C | |
| Max current | 120 A for 10 ms | | 120 A for 10 ms | | 120 A for 10 ms | |
| Leakage current with signal 0 | 5 mA | | 5 mA | | 5 mA | |
| Min applicable load | — | | — | | — | |
| Max fuse current | — | | — | | — | |
| Connection type | 2.5 mm ² [AWG26-14], screw type | | 2.5 mm ² [AWG26-14], screw type | | 2.5 mm ² [AWG26-14], screw type | |
| Protection circuit device | — | | — | | — | |
| GENERAL TECHNICAL DATA | | | | | | |
| Operating temperature range | -20...+80°C (derating -0.05 A/°C over 30°C) | | -20...+80°C (derating -0.05 A/°C over 30°C) | | -20...+80°C (derating -0.05 A/°C over 30°C) | |
| Input output isolation | 2.5 kVac / 60 s | | 2.5 kVac / 60 s | | 2.5 kVac / 60 s | |
| Protection degree | IP 00 | | IP 00 | | IP 00 | |
| Reference Standards | — | | — | | — | |
| Overvoltage category pollution degree | II / 2 | | II / 2 | | II / 2 | |
| Status indication | LED "Input" | | LED "Input" | | LED "Input" | |
| Housing material | UL94V-0 plastic material | | UL94V-0 plastic material | | UL94V-0 plastic material | |
| Dimensions | 70x93x75 mm | | 137x93x75 mm | | 250x93x75 mm | |
| Approximate weight | 207 g | | 379 g | | 756 g | |
| Mounting information | vertical on a rail, side by side | | vertical on a rail, side by side | | vertical on a rail, side by side | |
| APPROVALS | CE | | CE | | CE | |
| ACCESSORIES | | | | | | |
| Mounting rail IEC60715 TH35 75 | PR/3/AC, PR/3/AC/ZB, PR/3/AS, PR/3/AS/ZB | | PR/3/AC, PR/3/AC/ZB, PR/3/AS, PR/3/AS/ZB | | PR/3/AC, PR/3/AC/ZB, PR/3/AS, PR/3/AS/ZB | |
| Mounting rail IEC60715 TH35 15 | PR/3/PP, PR/3/PP/ZB, PR/3/PA, PR/3/PA/ZB | | PR/3/PP, PR/3/PP/ZB, PR/3/PA, PR/3/PA/ZB | | PR/3/PP, PR/3/PP/ZB, PR/3/PA, PR/3/PA/ZB | |
| Marking tag | — | | — | | — | |
| Spare part relay | 8904405 | | 8904405 | | 8904405 | |