

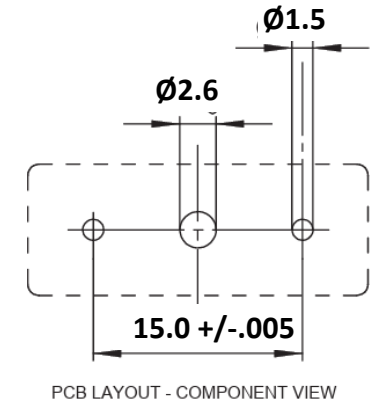
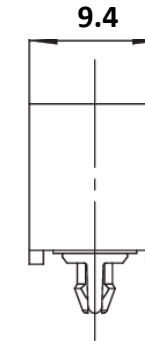
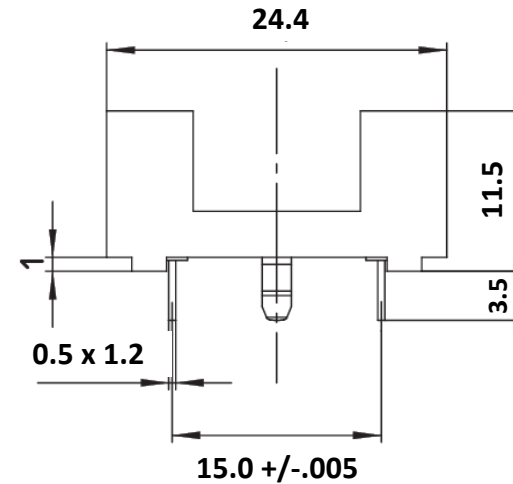


## Technical Specifications:

- **Voltage Rating:** 250V AC
- **Current Rating:** 20A
- **Poles:** 1 Pole
- **Contact Resistance:** 5/10 mOhm Max
- **Material Insulator:** PA6/66
- **Flammability Rating:** UL94 V0
- **Operating Temperature:** -30°C to 120°C
- **Color:** Green
- **Shocksafe Category:** PC1

## Mechanical Fuse-Link: 5 x 20mm

- **Mount:** PCB Mount
- **Pitch:** 15mm
- **Center Tab:** 2.6Ø
- **Termination:** PC Pins 1.5Ø
- **Optional Cover:** BS232



The ASI PTF-75 is a PCB-mount fuse holder designed to accept standard 5 x 20mm glass or ceramic fuses. Engineered for 250V circuits with a 15mm pin pitch with locating center tab, it features a compact through-hole mount design, making it ideal for power supplies, control boards, or compact electronics where space and safety matter. Compatible with both glass and ceramic fuse types, this UL-compliant holder offers a reliable and cost-effective solution for circuit protection on printed circuit boards.